

The SQE: Qualified lawyers and overseas students

Julie Brannan, Director of Education and Training
Ben Fisher, Head of External Communications

The SQE



Current QLTS candidates



If you have passed QLTS part one (multiple choice) before 1 September 2021 you can choose:

- Pass QLTS part two (OSCE) + apply for admission by 31 August 2022; **or**
- Pass SQE2 + apply for admission by 31 August 2023



If you have not passed QLTS part one before 1 September 2021, or are fully exempt – you are not in the QLTS transitional cohort

Foreign qualified lawyers in future

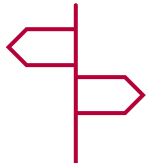
- Qualified lawyer – someone with a professional legal qualification and practice rights
- To qualify in England and Wales, you must:
 - Pass SQE1 and 2
 - Meet our character and suitability requirements
- No work experience requirement
- Can apply for exemptions
- Possible language test for candidates with SQE exemptions



Overseas students and trainees

- Overseas degree will usually count – we will check
- You can get QWE overseas – needs to be signed off by a COLP or other solicitor of England and Wales
- SQE1 available to sit internationally, availability will evolve with demand
- SQE2 written assessments available internationally
- SQE2 oral assessments only available in England and Wales





You could still qualify through the current LPC route if you have accepted an offer to start an LPC or QLD, before 1 September 2021 – see exact details on our website



To qualify through the SQE you will need:

- Degree or CILEx level 6 qualification
- CILEx work experience will likely count
- Pass SQE1 and 2
- Character and suitability




For qualified lawyers route, need to have completed pupillage and have practice rights



Already have a degree

Experience at the bar likely to count

You will also need:

- 
- Pass SQE1 and 2 – unless you have exemptions
 - Character and suitability

Exemptions



Qualified lawyers can apply from exemptions



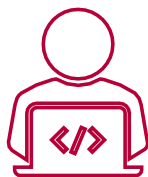
Must demonstrate that qualifications and/or experience are equivalent in content and standard to the SQE



Exemptions can only be granted for the whole of:

- SQE1 paper one
- SQE1 paper two
- SQE2

Keep in touch



Send your
queries to
sqe@sra.org.uk



SQE resources
[sra.org.uk/
becomingasolicitor](https://sra.org.uk/becomingasolicitor)



Subscribe to our
monthly
[SQE Update](#)